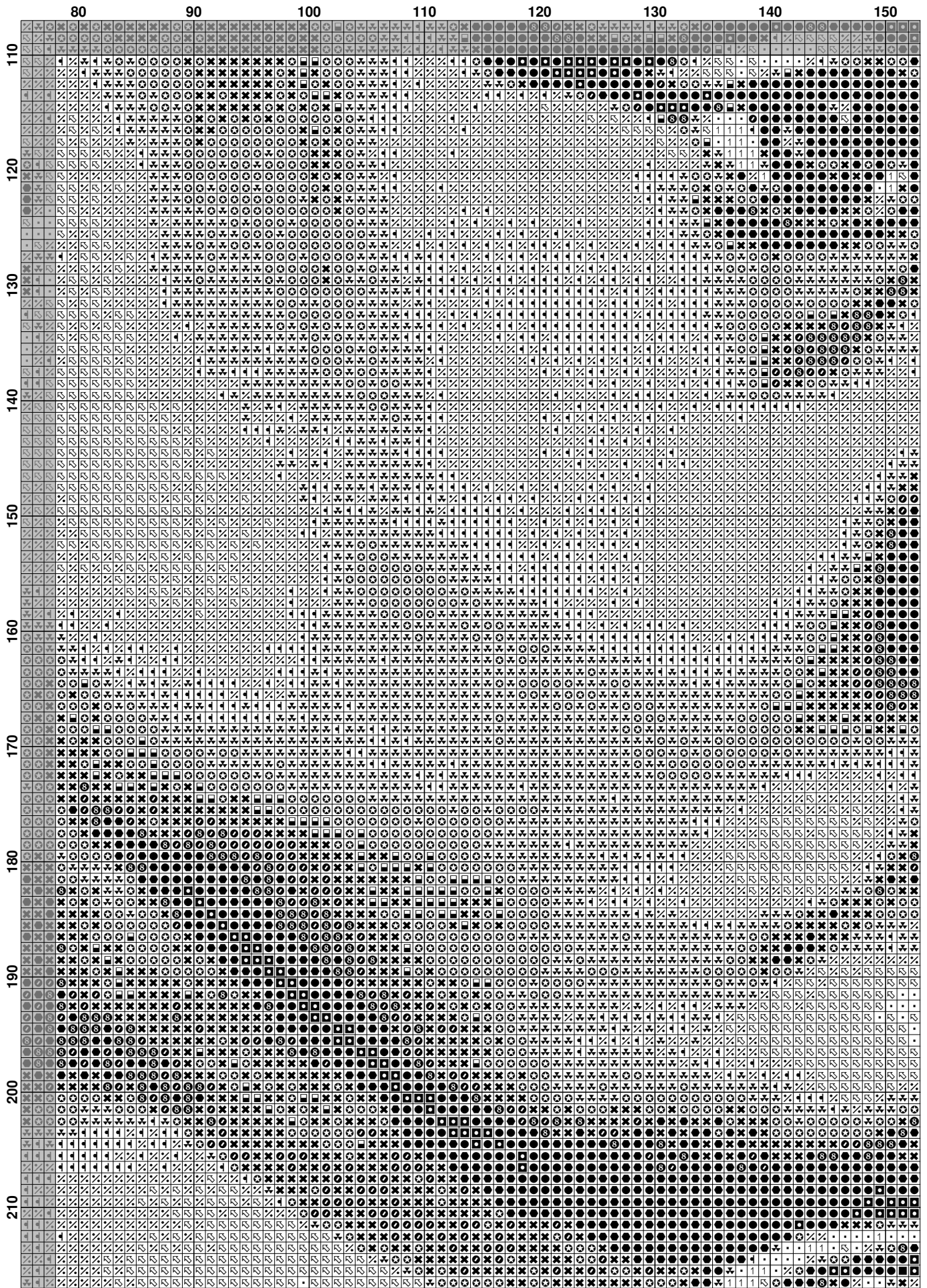


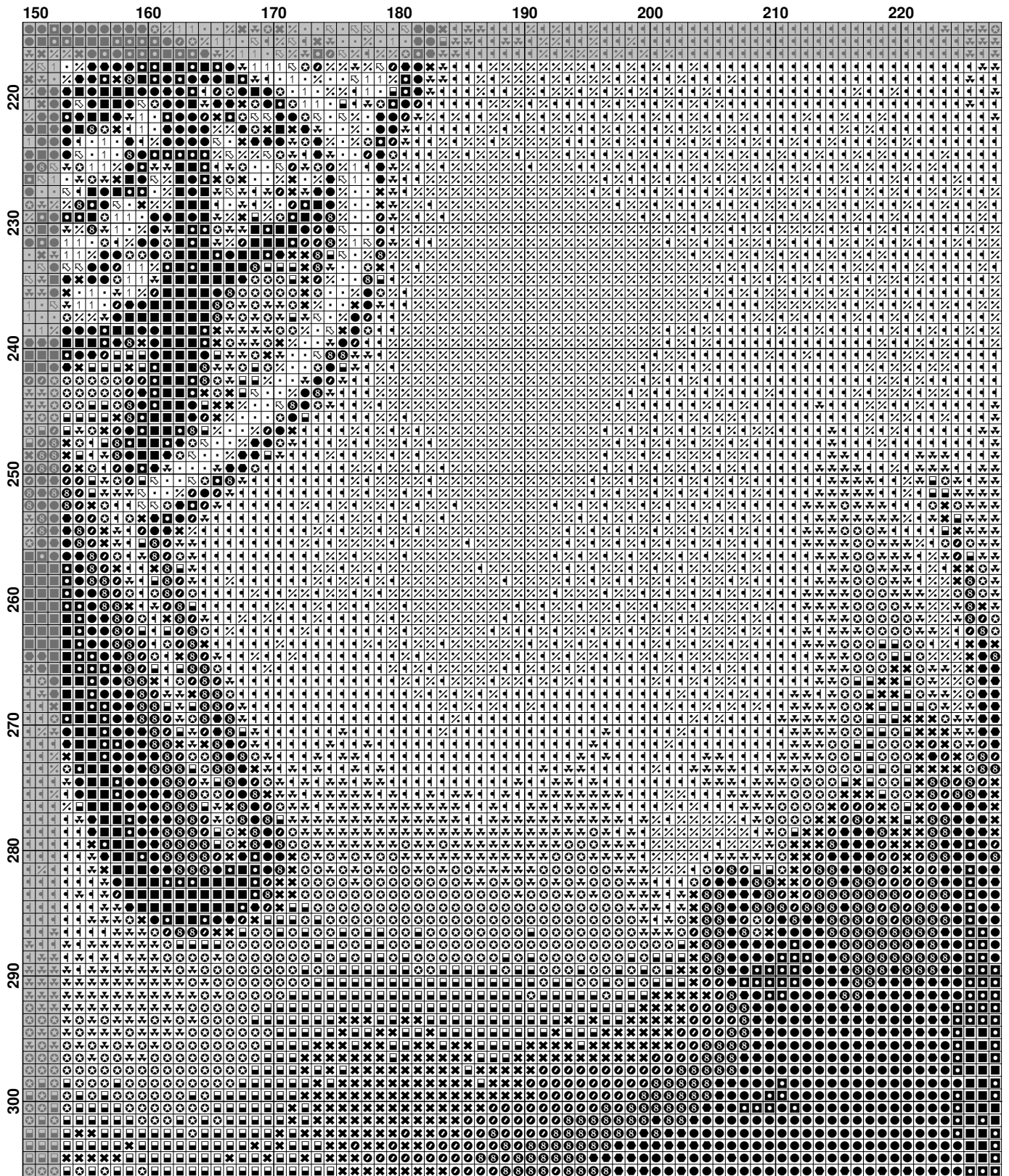
	10	20	30	40	50	60	70
110
120
130
140
150
160
170
180
190
200
210

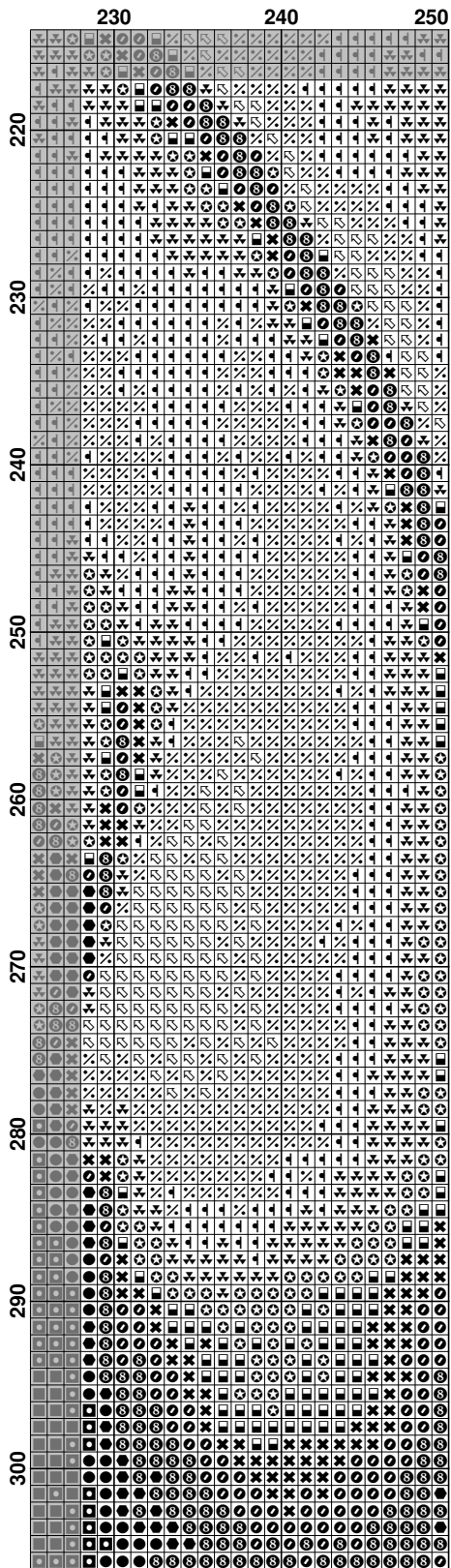


	150	160	170	180	190	200	210	220
110
120
130
140
150
160
170
180
190
200
210

	230	240	250
110
120
130
140
150
160
170
180
190
200
210

























Fabric: Aida 14, White
250w X 306h Stitches
Size: 14 Count, 45.36w X 55.52h cm

Floss Used for Full Stitches:

Symbol	Strands	Type	Number	Color
	2	DMC	310	Black
	2	DMC	433	Brown-MD
	2	DMC	434	Brown-LT
	2	DMC	435	Brown-VY LT
	2	DMC	436	Tan
	2	DMC	437	Tan-LT
	2	DMC	898	Coffee Brown-VY DK
	2	DMC	938	Coffee Brown-UL DK
	2	DMC	945	Tawny
	2	DMC	951	Tawny-LT
	2	DMC	3371	Black Brown
	2	DMC	3770	Tawny-VY LT
	1	DMC	436	Tan
	1	DMC	435	Brown-VY LT
	1	DMC	437	Tan-LT
	1	DMC	945	Tawny
	1	DMC	435	Brown-VY LT
	1	DMC	434	Brown-LT