

# Heaven and Earth Designs

## Eros

Chart No: HAERM 208

By Michele Sayetta

Artwork by Rachel Marks



Finished Design Size 329 W by 491 H (13-1/8 W X 19-5/8 H inches on 25ct fabric)

Heaven and Earth Designs

425 9th Street SW

Willmar MN 56201

320-214-7998

[www.heavenandearthdesigns.com](http://www.heavenandearthdesigns.com)

Copyright Heaven and Earth Designs 2007

Copyright Rachel Marks 2007

## Instructions

The model for Eros is recommended to be stitched over 1 on 25ct, Linen or Evenweave may be used.

You may use 1 or 2 strands of floss depending on your preference.

It is recommended that you make working copies and enlarge to view detail and symbols.

We also suggest using a #28 needle when working over 1 on 25ct.

This is a large project that will offer many hours of stitching pleasure.

We thank you for purchasing this design and welcome any questions or comments that you may have.

*Heaven and Earth Designs  
320-214-7998*

*[Http://www.heavenandearthdesigns.com](http://www.heavenandearthdesigns.com)*

**Pattern Name:** Eros-Marks  
**Designed By:** Michele Sayetta  
**Company:** Heaven and Earth Designs  
**Copyright:** 2007  
**Fabric:** Linen 25, White  
 329w X 491h Stitches  
**Size:** 25 Count, 13-1/8w X 19-5/8h in

### Floss Used for Full Stitches:

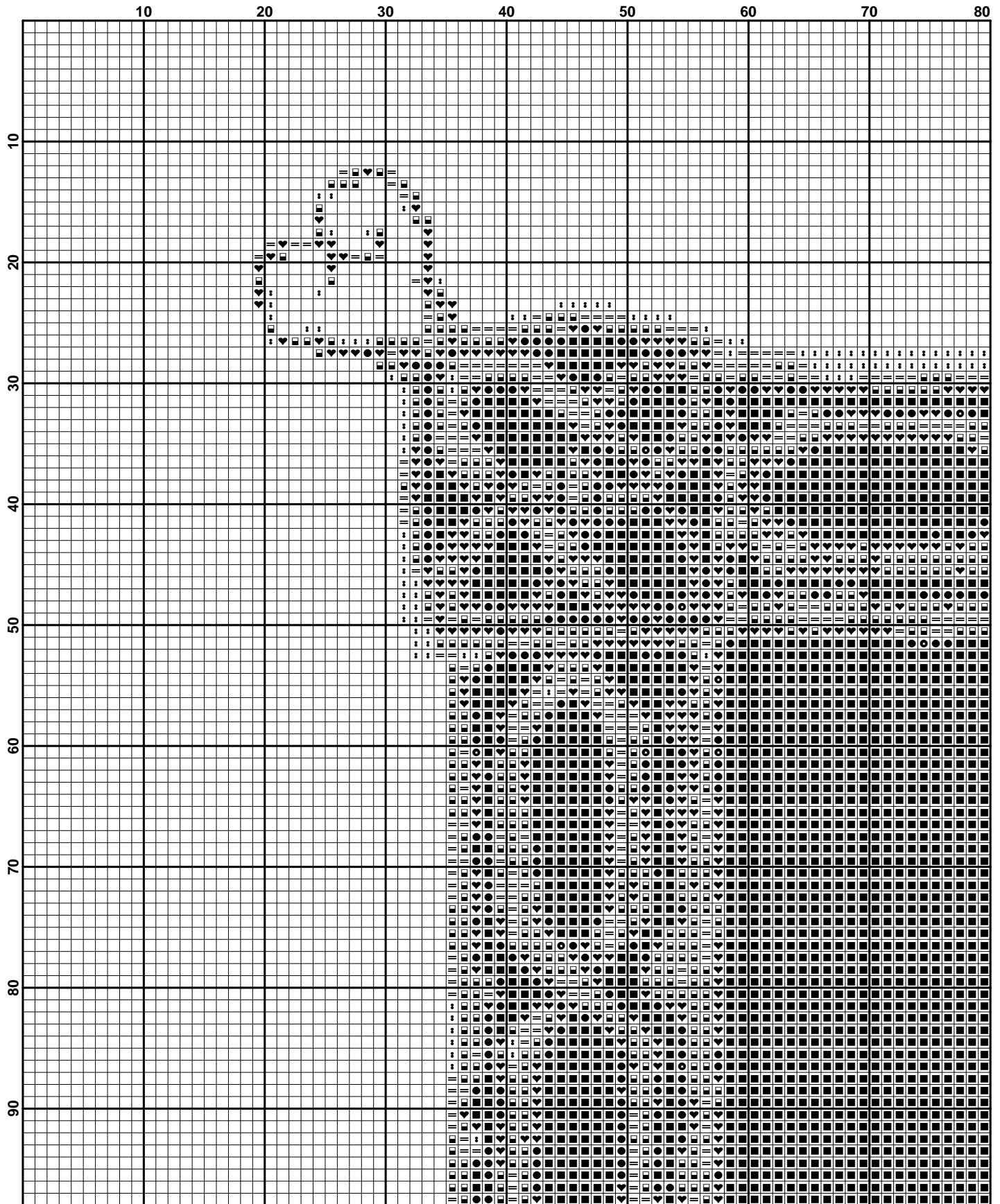
Symbol	Strands	Type	Number	Color
■	2	DMC	310	Black
●	2	DMC	326	Rose-VYDK
■	2	DMC	355	Terra Cotta-DK
♥	2	DMC	413	Pewter Gray-DK
■	2	DMC	414	Steel Gray-DK
⋮	2	DMC	415	Pearl Gray
✕	2	DMC	606	Bright Orange-Red
=	2	DMC	647	Beaver Gray-MD
⊖	2	DMC	721	Orange Spice-MD
⌞	2	DMC	722	Orange Spice-LT
⊗	2	DMC	728	Topaz
☾	2	DMC	741	Tangerine-MD
7	2	DMC	743	Yellow-MD
⋮	2	DMC	782	Topaz-DK
⊗	2	DMC	816	Garnet
◆	2	DMC	900	Burnt Orange-DK
⊗	2	DMC	902	Garnet-VYDK
●	2	DMC	934	Black Avocado Green
3	2	DMC	945	Tawny
↑	2	DMC	947	Burnt Orange
●	2	DMC	3031	Mocha Brown-VYDK
↓	2	DMC	3721	Shell Pink-DK
u	2	DMC	3756	Baby Blue-UL VY LT
✕	2	DMC	3771	Terra Cotta-UL VY LT
⊗	2	DMC	3863	Mocha Beige-MD

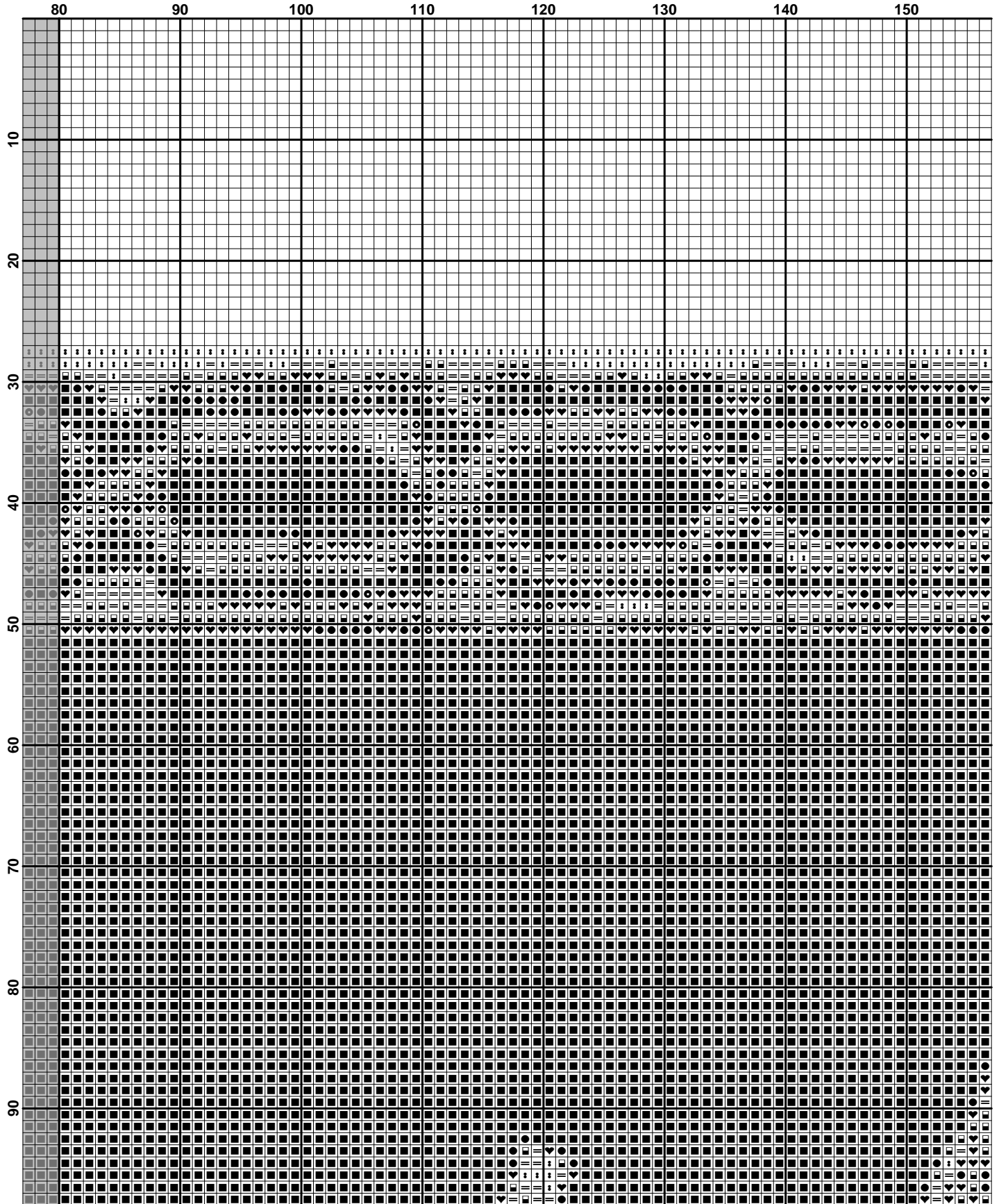
## Usage Summary

Strands Per Skein: 6

Skein Length: 313.0 in

Type	Number	Full	Half	Quarter	Petite	Back(in)	Str(in)	Spec(in)	French	Bead	Skein Est.
■ DMC 310	15857	0	0	0	0	0.0	0.0	0.0	0	0	5.000
■ DMC 326	128	0	0	0	0	0.0	0.0	0.0	0	0	1.000
■ DMC 355	56	0	0	0	0	0.0	0.0	0.0	0	0	1.000
■ DMC 413	8860	0	0	0	0	0.0	0.0	0.0	0	0	3.000
■ DMC 414	9923	0	0	0	0	0.0	0.0	0.0	0	0	3.000
■ DMC 415	14186	0	0	0	0	0.0	0.0	0.0	0	0	4.000
■ DMC 606	370	0	0	0	0	0.0	0.0	0.0	0	0	1.000
■ DMC 647	8422	0	0	0	0	0.0	0.0	0.0	0	0	3.000
■ DMC 721	4263	0	0	0	0	0.0	0.0	0.0	0	0	2.000
■ DMC 722	3697	0	0	0	0	0.0	0.0	0.0	0	0	2.000
■ DMC 728	1323	0	0	0	0	0.0	0.0	0.0	0	0	1.000
■ DMC 741	1512	0	0	0	0	0.0	0.0	0.0	0	0	1.000
■ DMC 743	2095	0	0	0	0	0.0	0.0	0.0	0	0	1.000
■ DMC 782	40	0	0	0	0	0.0	0.0	0.0	0	0	1.000
■ DMC 816	63	0	0	0	0	0.0	0.0	0.0	0	0	1.000
■ DMC 900	457	0	0	0	0	0.0	0.0	0.0	0	0	1.000
■ DMC 902	64	0	0	0	0	0.0	0.0	0.0	0	0	1.000
■ DMC 934	4853	0	0	0	0	0.0	0.0	0.0	0	0	2.000
■ DMC 945	3005	0	0	0	0	0.0	0.0	0.0	0	0	1.000
■ DMC 947	2502	0	0	0	0	0.0	0.0	0.0	0	0	1.000
■ DMC 3031	402	0	0	0	0	0.0	0.0	0.0	0	0	1.000
■ DMC 3721	87	0	0	0	0	0.0	0.0	0.0	0	0	1.000
■ DMC 3756	47725	0	0	0	0	0.0	0.0	0.0	0	0	14.000
■ DMC 3771	1189	0	0	0	0	0.0	0.0	0.0	0	0	1.000
■ DMC 3863	295	0	0	0	0	0.0	0.0	0.0	0	0	1.000

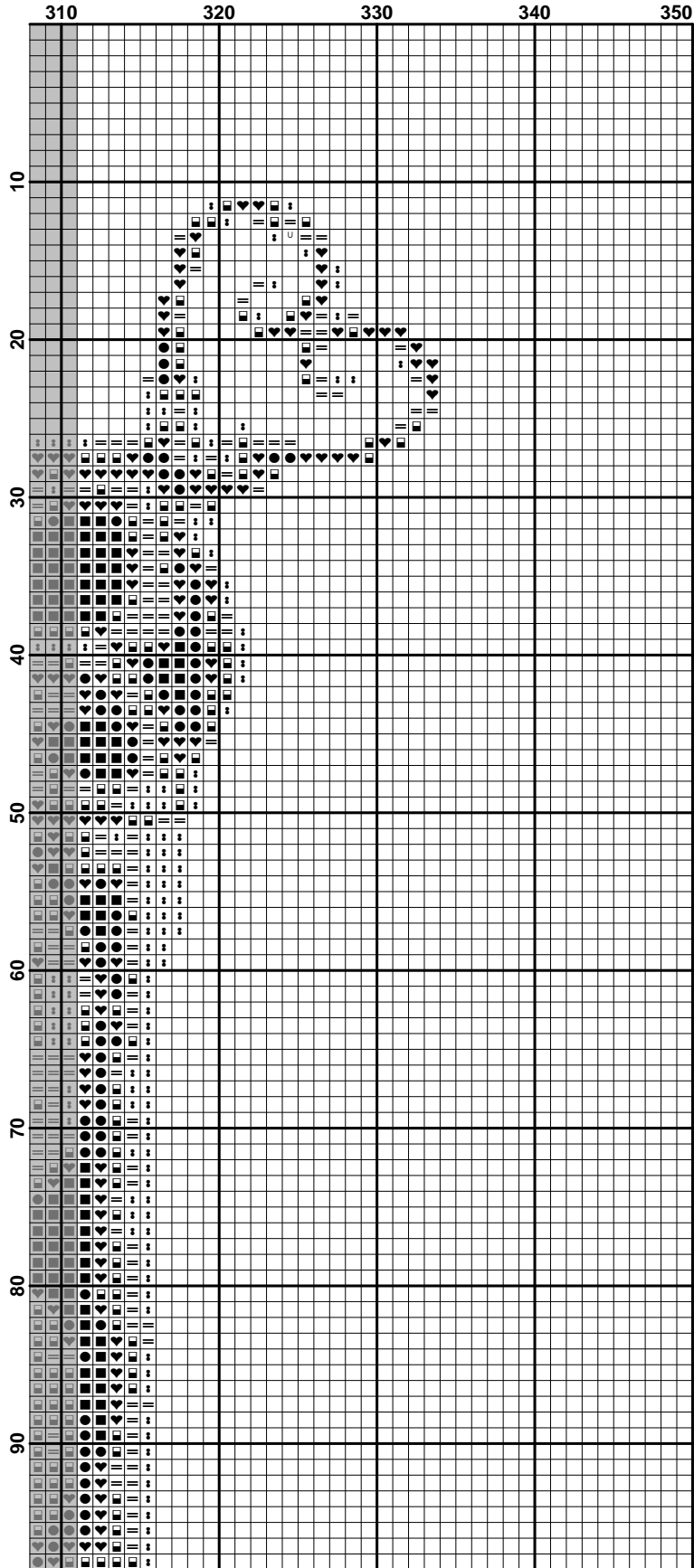




	160	170	180	190	200	210	220	230
10								
20								
30								
40								
50								
60								
70								
80								
90								

	240	250	260	270	280	290	300	310
10								
20								
30	U	U	U	U	U	U	U	U
40	U	U	U	U	U	U	U	U
50	U	U	U	U	U	U	U	U
60	U	U	U	U	U	U	U	U
70	U	U	U	U	U	U	U	U
80	U	U	U	U	U	U	U	U
90	U	U	U	U	U	U	U	U



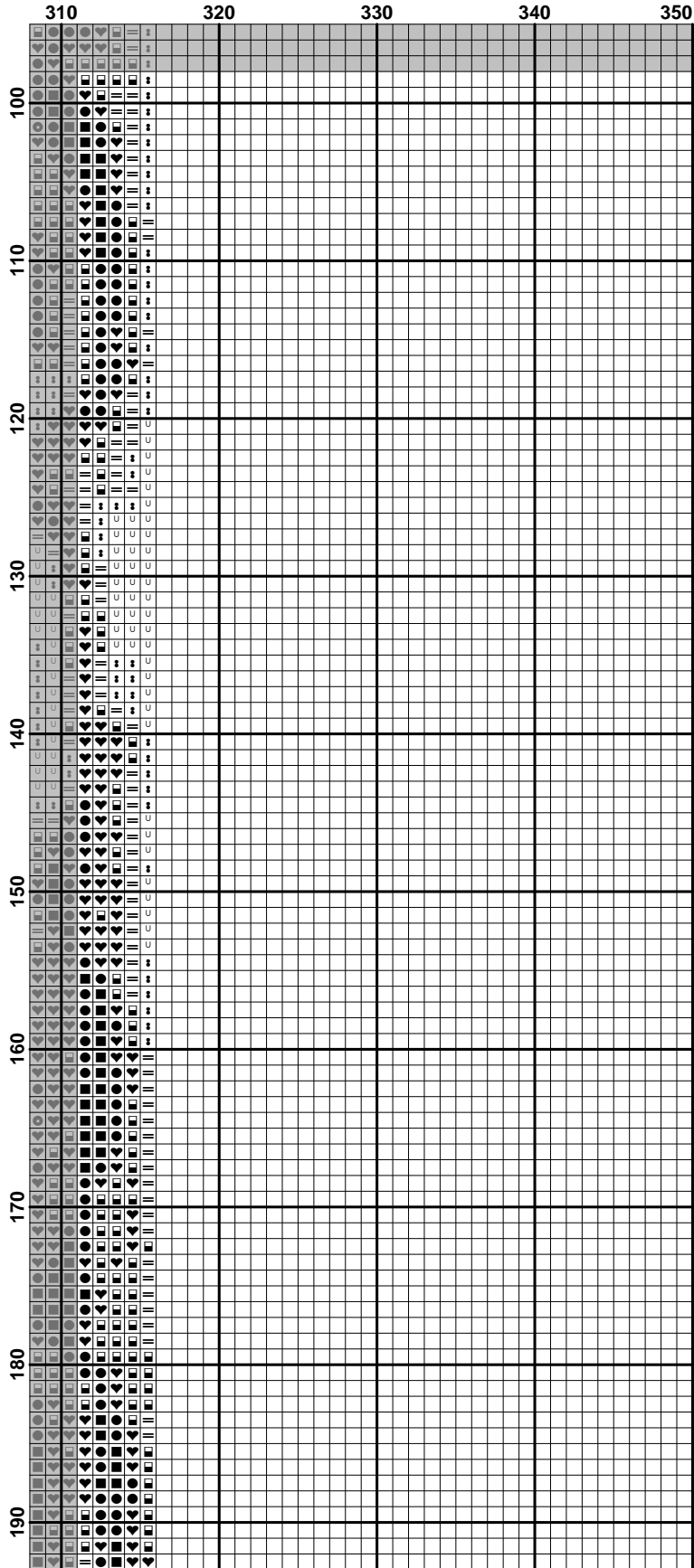




	80	90	100	110	120	130	140	150
100	...	...	...	...	...	...	...	...
110	...	...	...	...	...	...	...	...
120	...	...	...	...	...	...	...	...
130	...	...	...	...	...	...	...	...
140	...	...	...	...	...	...	...	...
150	...	...	...	...	...	...	...	...
160	...	...	...	...	...	...	...	...
170	...	...	...	...	...	...	...	...
180	...	...	...	...	...	...	...	...
190	...	...	...	...	...	...	...	...

	160	170	180	190	200	210	220	230
100	U	U	U	U	U	U	U	U
110	U	U	U	U	U	U	U	U
120	U	U	U	U	U	U	U	U
130	U	U	U	U	U	U	U	U
140	U	U	U	U	U	U	U	U
150	U	U	U	U	U	U	U	U
160	U	U	U	U	U	U	U	U
170	U	U	U	U	U	U	U	U
180	U	U	U	U	U	U	U	U
190	U	U	U	U	U	U	U	U

	240	250	260	270	280	290	300	310
100	U	U	U	U	U	U	U	U
110	U	U	U	U	U	U	U	U
120	U	U	U	U	U	U	U	U
130	U	U	U	U	U	U	U	U
140	U	U	U	U	U	U	U	U
150	U	U	U	U	U	U	U	U
160	U	U	U	U	U	U	U	U
170	U	U	U	U	U	U	U	U
180	U	U	U	U	U	U	U	U
190	U	U	U	U	U	U	U	U



190	10	20	30	40	50	60	70	80
	3 3 X 3 3 3 7 3							
200								
210								
220								
230								
240								
250								
260								
270								
280								

	80	90	100	110	120	130	140	150
190	U	U	U	U	U	U	U	U
191	U	U	U	U	U	U	U	U
192	U	U	U	U	U	U	U	U
193	U	U	U	U	U	U	U	U
194	U	U	U	U	U	U	U	U
195	U	U	U	U	U	U	U	U
196	U	U	U	U	U	U	U	U
197	U	U	U	U	U	U	U	U
198	U	U	U	U	U	U	U	U
199	U	U	U	U	U	U	U	U
200	U	U	U	U	U	U	U	U
201	U	U	U	U	U	U	U	U
202	U	U	U	U	U	U	U	U
203	U	U	U	U	U	U	U	U
204	U	U	U	U	U	U	U	U
205	U	U	U	U	U	U	U	U
206	U	U	U	U	U	U	U	U
207	U	U	U	U	U	U	U	U
208	U	U	U	U	U	U	U	U
209	U	U	U	U	U	U	U	U
210	U	U	U	U	U	U	U	U
211	U	U	U	U	U	U	U	U
212	U	U	U	U	U	U	U	U
213	U	U	U	U	U	U	U	U
214	U	U	U	U	U	U	U	U
215	U	U	U	U	U	U	U	U
216	U	U	U	U	U	U	U	U
217	U	U	U	U	U	U	U	U
218	U	U	U	U	U	U	U	U
219	U	U	U	U	U	U	U	U
220	U	U	U	U	U	U	U	U
221	U	U	U	U	U	U	U	U
222	U	U	U	U	U	U	U	U
223	U	U	U	U	U	U	U	U
224	U	U	U	U	U	U	U	U
225	U	U	U	U	U	U	U	U
226	U	U	U	U	U	U	U	U
227	U	U	U	U	U	U	U	U
228	U	U	U	U	U	U	U	U
229	U	U	U	U	U	U	U	U
230	U	U	U	U	U	U	U	U
231	U	U	U	U	U	U	U	U
232	U	U	U	U	U	U	U	U
233	U	U	U	U	U	U	U	U
234	U	U	U	U	U	U	U	U
235	U	U	U	U	U	U	U	U
236	U	U	U	U	U	U	U	U
237	U	U	U	U	U	U	U	U
238	U	U	U	U	U	U	U	U
239	U	U	U	U	U	U	U	U
240	U	U	U	U	U	U	U	U
241	U	U	U	U	U	U	U	U
242	U	U	U	U	U	U	U	U
243	U	U	U	U	U	U	U	U
244	U	U	U	U	U	U	U	U
245	U	U	U	U	U	U	U	U
246	U	U	U	U	U	U	U	U
247	U	U	U	U	U	U	U	U
248	U	U	U	U	U	U	U	U
249	U	U	U	U	U	U	U	U
250	U	U	U	U	U	U	U	U
251	U	U	U	U	U	U	U	U
252	U	U	U	U	U	U	U	U
253	U	U	U	U	U	U	U	U
254	U	U	U	U	U	U	U	U
255	U	U	U	U	U	U	U	U
256	U	U	U	U	U	U	U	U
257	U	U	U	U	U	U	U	U
258	U	U	U	U	U	U	U	U
259	U	U	U	U	U	U	U	U
260	U	U	U	U	U	U	U	U
261	U	U	U	U	U	U	U	U
262	U	U	U	U	U	U	U	U
263	U	U	U	U	U	U	U	U
264	U	U	U	U	U	U	U	U
265	U	U	U	U	U	U	U	U
266	U	U	U	U	U	U	U	U
267	U	U	U	U	U	U	U	U
268	U	U	U	U	U	U	U	U
269	U	U	U	U	U	U	U	U
270	U	U	U	U	U	U	U	U
271	U	U	U	U	U	U	U	U
272	U	U	U	U	U	U	U	U
273	U	U	U	U	U	U	U	U
274	U	U	U	U	U	U	U	U
275	U	U	U	U	U	U	U	U
276	U	U	U	U	U	U	U	U
277	U	U	U	U	U	U	U	U
278	U	U	U	U	U	U	U	U
279	U	U	U	U	U	U	U	U
280	U	U	U	U	U	U	U	U



	160	170	180	190	200	210	220	230
190	U	U	U	U	U	U	U	U
200	U	U	U	U	U	U	U	U
210	U	U	U	U	U	U	U	U
220	U	U	U	U	U	U	U	U
230	U	U	U	U	U	U	U	U
240	U	U	U	U	U	U	U	U
250	U	U	U	U	U	U	U	U
260	U	U	U	U	U	U	U	U
270	U	U	U	U	U	U	U	U
280	U	U	U	U	U	U	U	U

	190	240	250	260	270	280	290	300	310
190	U	U	U	U	U	U	U	U	U
200	U	U	U	U	U	U	U	U	U
210	U	U	U	U	U	U	U	U	U
220	U	U	U	U	U	U	U	U	U
230	U	U	U	U	U	U	U	U	U
240	U	U	U	U	U	U	U	U	U
250	U	U	U	U	U	U	U	U	U
260	U	U	U	U	U	U	U	U	U
270	U	U	U	U	U	U	U	U	U
280	U	U	U	U	U	U	U	U	U
290	U	U	U	U	U	U	U	U	U
300	U	U	U	U	U	U	U	U	U
310	U	U	U	U	U	U	U	U	U



	10	20	30	40	50	60	70	80
290								
300								
310								
320								
330								
340								
350								
360								
370								
380								

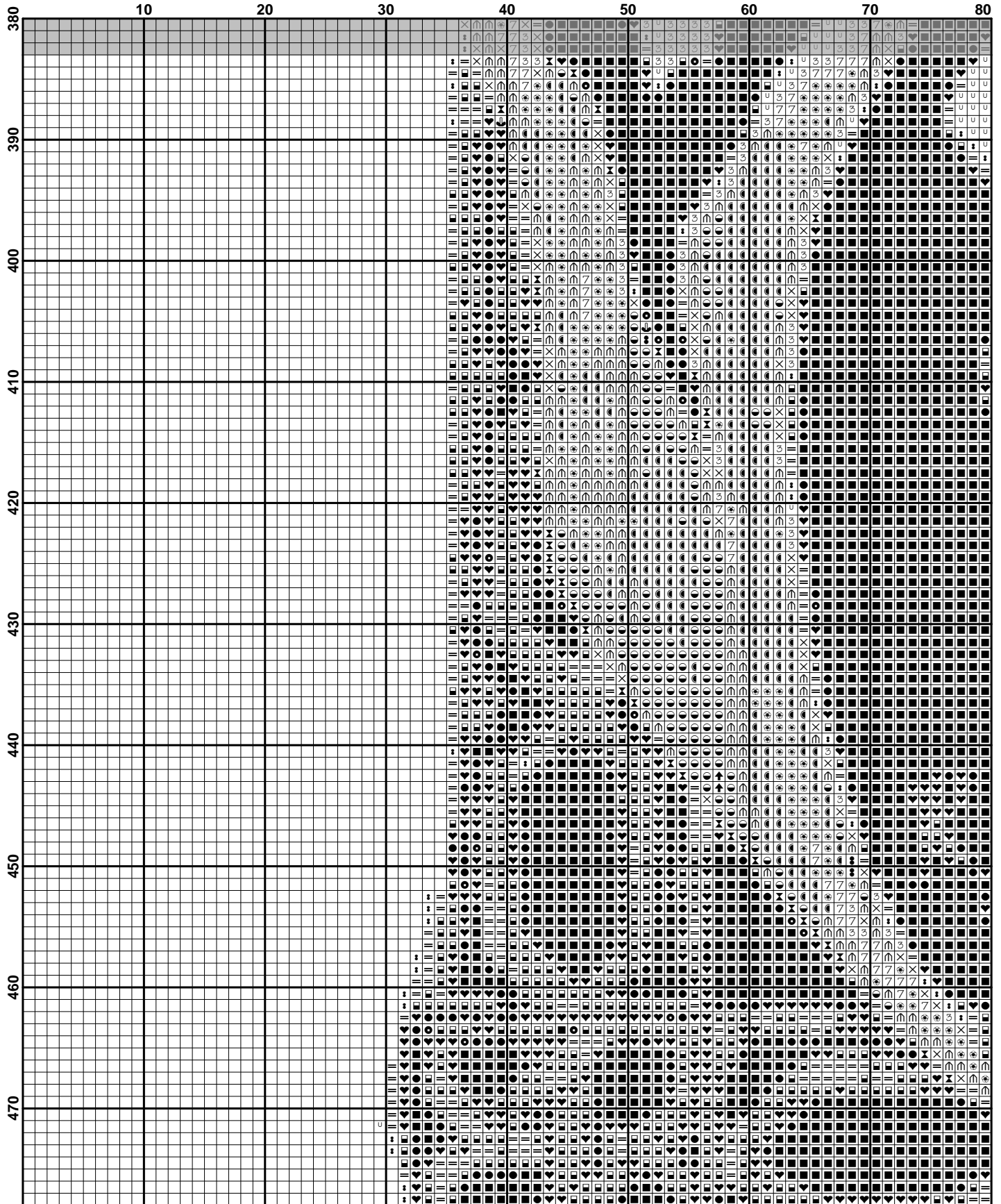
	80	90	100	110	120	130	140	150
290	...	...	...	...	...	...	...	...
300	...	...	...	...	...	...	...	...
310	...	...	...	...	...	...	...	...
320	...	...	...	...	...	...	...	...
330	...	...	...	...	...	...	...	...
340	...	...	...	...	...	...	...	...
350	...	...	...	...	...	...	...	...
360	...	...	...	...	...	...	...	...
370	...	...	...	...	...	...	...	...
380	...	...	...	...	...	...	...	...

	160	170	180	190	200	210	220	230
290	u	u	u	u	u	u	u	u
300	u	u	u	u	u	u	u	u
310	u	u	u	u	u	u	u	u
320	u	u	u	u	u	u	u	u
330	u	u	u	u	u	u	u	u
340	u	u	u	u	u	u	u	u
350	u	u	u	u	u	u	u	u
360	u	u	u	u	u	u	u	u
370	u	u	u	u	u	u	u	u
380	u	u	u	u	u	u	u	u

	240	250	260	270	280	290	300	310	320	330	340	350	360	370	380
290	U	U	U	U	U	U	U	U	U	U	U	U	U	U	U
300	U	U	U	U	U	U	U	U	U	U	U	U	U	U	U
310	U	U	U	U	U	U	U	U	U	U	U	U	U	U	U
320	U	U	U	U	U	U	U	U	U	U	U	U	U	U	U
330	U	U	U	U	U	U	U	U	U	U	U	U	U	U	U
340	U	U	U	U	U	U	U	U	U	U	U	U	U	U	U
350	U	U	U	U	U	U	U	U	U	U	U	U	U	U	U
360	U	U	U	U	U	U	U	U	U	U	U	U	U	U	U
370	U	U	U	U	U	U	U	U	U	U	U	U	U	U	U
380	U	U	U	U	U	U	U	U	U	U	U	U	U	U	U







	80	90	100	110	120	130	140	150
380	U	U	U	U	U	U	U	U
390	U	U	U	U	U	U	U	U
400	U	U	U	U	U	U	U	U
410	U	U	U	U	U	U	U	U
420	U	U	U	U	U	U	U	U
430	U	U	U	U	U	U	U	U
440	U	U	U	U	U	U	U	U
450	U	U	U	U	U	U	U	U
460	U	U	U	U	U	U	U	U
470	U	U	U	U	U	U	U	U

	160	170	180	190	200	210	220	230
380	U	U	U	U	U	U	U	U
381	U	U	U	U	U	U	U	U
382	U	U	U	U	U	U	U	U
383	U	U	U	U	U	U	U	U
384	U	U	U	U	U	U	U	U
385	U	U	U	U	U	U	U	U
386	U	U	U	U	U	U	U	U
387	U	U	U	U	U	U	U	U
388	U	U	U	U	U	U	U	U
389	U	U	U	U	U	U	U	U
390	U	U	U	U	U	U	U	U
391	U	U	U	U	U	U	U	U
392	U	U	U	U	U	U	U	U
393	U	U	U	U	U	U	U	U
394	U	U	U	U	U	U	U	U
395	U	U	U	U	U	U	U	U
396	U	U	U	U	U	U	U	U
397	U	U	U	U	U	U	U	U
398	U	U	U	U	U	U	U	U
399	U	U	U	U	U	U	U	U
400	U	U	U	U	U	U	U	U
401	U	U	U	U	U	U	U	U
402	U	U	U	U	U	U	U	U
403	U	U	U	U	U	U	U	U
404	U	U	U	U	U	U	U	U
405	U	U	U	U	U	U	U	U
406	U	U	U	U	U	U	U	U
407	U	U	U	U	U	U	U	U
408	U	U	U	U	U	U	U	U
409	U	U	U	U	U	U	U	U
410	U	U	U	U	U	U	U	U
411	U	U	U	U	U	U	U	U
412	U	U	U	U	U	U	U	U
413	U	U	U	U	U	U	U	U
414	U	U	U	U	U	U	U	U
415	U	U	U	U	U	U	U	U
416	U	U	U	U	U	U	U	U
417	U	U	U	U	U	U	U	U
418	U	U	U	U	U	U	U	U
419	U	U	U	U	U	U	U	U
420	U	U	U	U	U	U	U	U
421	U	U	U	U	U	U	U	U
422	U	U	U	U	U	U	U	U
423	U	U	U	U	U	U	U	U
424	U	U	U	U	U	U	U	U
425	U	U	U	U	U	U	U	U
426	U	U	U	U	U	U	U	U
427	U	U	U	U	U	U	U	U
428	U	U	U	U	U	U	U	U
429	U	U	U	U	U	U	U	U
430	U	U	U	U	U	U	U	U
431	U	U	U	U	U	U	U	U
432	U	U	U	U	U	U	U	U
433	U	U	U	U	U	U	U	U
434	U	U	U	U	U	U	U	U
435	U	U	U	U	U	U	U	U
436	U	U	U	U	U	U	U	U
437	U	U	U	U	U	U	U	U
438	U	U	U	U	U	U	U	U
439	U	U	U	U	U	U	U	U
440	U	U	U	U	U	U	U	U
441	U	U	U	U	U	U	U	U
442	U	U	U	U	U	U	U	U
443	U	U	U	U	U	U	U	U
444	U	U	U	U	U	U	U	U
445	U	U	U	U	U	U	U	U
446	U	U	U	U	U	U	U	U
447	U	U	U	U	U	U	U	U
448	U	U	U	U	U	U	U	U
449	U	U	U	U	U	U	U	U
450	U	U	U	U	U	U	U	U
451	U	U	U	U	U	U	U	U
452	U	U	U	U	U	U	U	U
453	U	U	U	U	U	U	U	U
454	U	U	U	U	U	U	U	U
455	U	U	U	U	U	U	U	U
456	U	U	U	U	U	U	U	U
457	U	U	U	U	U	U	U	U
458	U	U	U	U	U	U	U	U
459	U	U	U	U	U	U	U	U
460	U	U	U	U	U	U	U	U
461	U	U	U	U	U	U	U	U
462	U	U	U	U	U	U	U	U
463	U	U	U	U	U	U	U	U
464	U	U	U	U	U	U	U	U
465	U	U	U	U	U	U	U	U
466	U	U	U	U	U	U	U	U
467	U	U	U	U	U	U	U	U
468	U	U	U	U	U	U	U	U
469	U	U	U	U	U	U	U	U
470	U	U	U	U	U	U	U	U
471	U	U	U	U	U	U	U	U
472	U	U	U	U	U	U	U	U
473	U	U	U	U	U	U	U	U
474	U	U	U	U	U	U	U	U
475	U	U	U	U	U	U	U	U
476	U	U	U	U	U	U	U	U
477	U	U	U	U	U	U	U	U
478	U	U	U	U	U	U	U	U
479	U	U	U	U	U	U	U	U
480	U	U	U	U	U	U	U	U
481	U	U	U	U	U	U	U	U
482	U	U	U	U	U	U	U	U
483	U	U	U	U	U	U	U	U
484	U	U	U	U	U	U	U	U
485	U	U	U	U	U	U	U	U
486	U	U	U	U	U	U	U	U
487	U	U	U	U	U	U	U	U
488	U	U	U	U	U	U	U	U
489	U	U	U	U	U	U	U	U
490	U	U	U	U	U	U	U	U
491	U	U	U	U	U	U	U	U
492	U	U	U	U	U	U	U	U
493	U	U	U	U	U	U	U	U
494	U	U	U	U	U	U	U	U
495	U	U	U	U	U	U	U	U
496	U	U	U	U	U	U	U	U
497	U	U	U	U	U	U	U	U
498	U	U	U	U	U	U	U	U
499	U	U	U	U	U	U	U	U

	240	250	260	270	280	290	300	310
380	U	U	U	U	U	U	U	U
381	U	U	U	U	U	U	U	U
382	U	U	U	U	U	U	U	U
383	U	U	U	U	U	U	U	U
384	U	U	U	U	U	U	U	U
385	U	U	U	U	U	U	U	U
386	U	U	U	U	U	U	U	U
387	U	U	U	U	U	U	U	U
388	U	U	U	U	U	U	U	U
389	U	U	U	U	U	U	U	U
390	U	U	U	U	U	U	U	U
391	U	U	U	U	U	U	U	U
392	U	U	U	U	U	U	U	U
393	U	U	U	U	U	U	U	U
394	U	U	U	U	U	U	U	U
395	U	U	U	U	U	U	U	U
396	U	U	U	U	U	U	U	U
397	U	U	U	U	U	U	U	U
398	U	U	U	U	U	U	U	U
399	U	U	U	U	U	U	U	U
400	U	U	U	U	U	U	U	U
401	U	U	U	U	U	U	U	U
402	U	U	U	U	U	U	U	U
403	U	U	U	U	U	U	U	U
404	U	U	U	U	U	U	U	U
405	U	U	U	U	U	U	U	U
406	U	U	U	U	U	U	U	U
407	U	U	U	U	U	U	U	U
408	U	U	U	U	U	U	U	U
409	U	U	U	U	U	U	U	U
410	U	U	U	U	U	U	U	U
411	U	U	U	U	U	U	U	U
412	U	U	U	U	U	U	U	U
413	U	U	U	U	U	U	U	U
414	U	U	U	U	U	U	U	U
415	U	U	U	U	U	U	U	U
416	U	U	U	U	U	U	U	U
417	U	U	U	U	U	U	U	U
418	U	U	U	U	U	U	U	U
419	U	U	U	U	U	U	U	U
420	U	U	U	U	U	U	U	U
421	U	U	U	U	U	U	U	U
422	U	U	U	U	U	U	U	U
423	U	U	U	U	U	U	U	U
424	U	U	U	U	U	U	U	U
425	U	U	U	U	U	U	U	U
426	U	U	U	U	U	U	U	U
427	U	U	U	U	U	U	U	U
428	U	U	U	U	U	U	U	U
429	U	U	U	U	U	U	U	U
430	U	U	U	U	U	U	U	U
431	U	U	U	U	U	U	U	U
432	U	U	U	U	U	U	U	U
433	U	U	U	U	U	U	U	U
434	U	U	U	U	U	U	U	U
435	U	U	U	U	U	U	U	U
436	U	U	U	U	U	U	U	U
437	U	U	U	U	U	U	U	U
438	U	U	U	U	U	U	U	U
439	U	U	U	U	U	U	U	U
440	U	U	U	U	U	U	U	U
441	U	U	U	U	U	U	U	U
442	U	U	U	U	U	U	U	U
443	U	U	U	U	U	U	U	U
444	U	U	U	U	U	U	U	U
445	U	U	U	U	U	U	U	U
446	U	U	U	U	U	U	U	U
447	U	U	U	U	U	U	U	U
448	U	U	U	U	U	U	U	U
449	U	U	U	U	U	U	U	U
450	U	U	U	U	U	U	U	U
451	U	U	U	U	U	U	U	U
452	U	U	U	U	U	U	U	U
453	U	U	U	U	U	U	U	U
454	U	U	U	U	U	U	U	U
455	U	U	U	U	U	U	U	U
456	U	U	U	U	U	U	U	U
457	U	U	U	U	U	U	U	U
458	U	U	U	U	U	U	U	U
459	U	U	U	U	U	U	U	U
460	U	U	U	U	U	U	U	U
461	U	U	U	U	U	U	U	U
462	U	U	U	U	U	U	U	U
463	U	U	U	U	U	U	U	U
464	U	U	U	U	U	U	U	U
465	U	U	U	U	U	U	U	U
466	U	U	U	U	U	U	U	U
467	U	U	U	U	U	U	U	U
468	U	U	U	U	U	U	U	U
469	U	U	U	U	U	U	U	U
470	U	U	U	U	U	U	U	U
471	U	U	U	U	U	U	U	U
472	U	U	U	U	U	U	U	U
473	U	U	U	U	U	U	U	U
474	U	U	U	U	U	U	U	U
475	U	U	U	U	U	U	U	U
476	U	U	U	U	U	U	U	U
477	U	U	U	U	U	U	U	U
478	U	U	U	U	U	U	U	U
479	U	U	U	U	U	U	U	U
480	U	U	U	U	U	U	U	U
481	U	U	U	U	U	U	U	U
482	U	U	U	U	U	U	U	U
483	U	U	U	U	U	U	U	U
484	U	U	U	U	U	U	U	U
485	U	U	U	U	U	U	U	U
486	U	U	U	U	U	U	U	U
487	U	U	U	U	U	U	U	U
488	U	U	U	U	U	U	U	U
489	U	U	U	U	U	U	U	U
490	U	U	U	U	U	U	U	U
491	U	U	U	U	U	U	U	U
492	U	U	U	U	U	U	U	U
493	U	U	U	U	U	U	U	U
494	U	U	U	U	U	U	U	U
495	U	U	U	U	U	U	U	U
496	U	U	U	U	U	U	U	U
497	U	U	U	U	U	U	U	U
498	U	U	U	U	U	U	U	U
499	U	U	U	U	U	U	U	U
500	U	U	U	U	U	U	U	U

	310	320	330	340	350
380					
390					
400					
410					
420					
430					
440					
450					
460					
470					

